

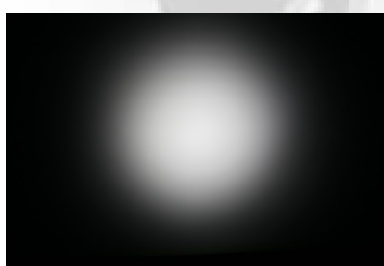
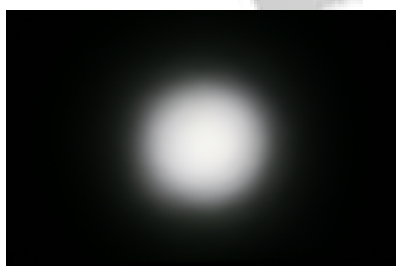
## CUTE-3-XP (MR11), lenses for CREE XP-G LEDs



- Specially designed for Cree XLAMP XP-G series of LEDs.
- Special care taken to make a uniform white or warm white illumination. Lenses work well with other colors, too.
- Lens material optical grade PMMA. Allows use of high current and temperature conditions (105°C/220°F)
- No lens holder. Fastening to heat sink with droplets of glue.
- Best available optical efficiency, up to 90%.

### LENS TYPES

NAME	ORDERING CODE	FWHM Angle
CUTE-3 SMOOTH SPOT XP	C10754_Cute-3-SS-XP	$\pm 8^\circ$
CUTE-3 MEDIUM XP	C10755_Cute-3-M-XP	$\pm 13^\circ$
CUTE-3 WIDE XP	C10756_Cute-3-W-XP	$\pm^\circ$



C10754\_Cute-3-SS-XP

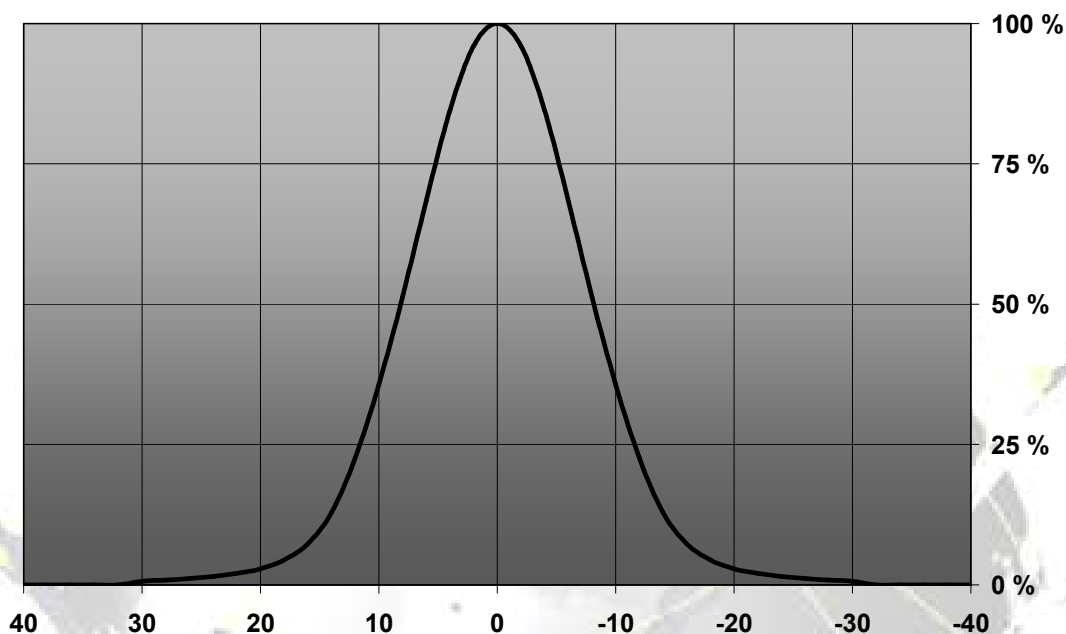
C10755\_Cute-3-M-XP

C10756\_Cute-3-W-XP

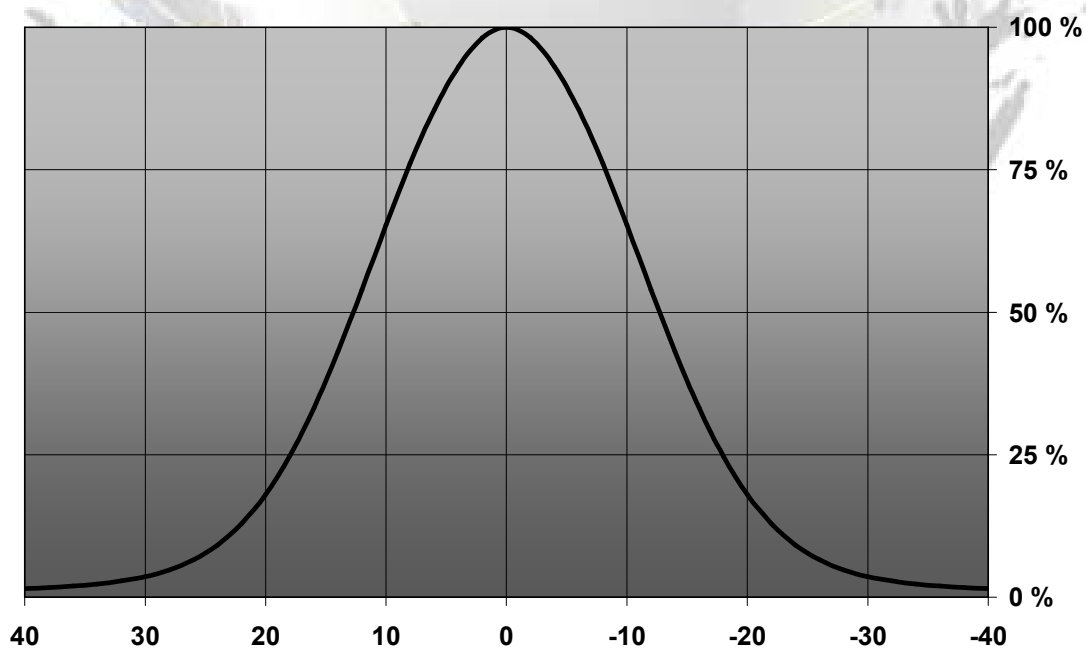
© Ledil Oy – PRELIMINARY - Subject to change without prior notice

## MEASUREMENT DATA

Relative Intensity of C10754\_Cute-3-SS



Relative Intensity of C10755\_Cute-3-ISF-M



© Ledil Oy – PRELIMINARY - Subject to change without prior notice



EULUMDAT & IES FILES AVAILABLE BY REQUEST

---

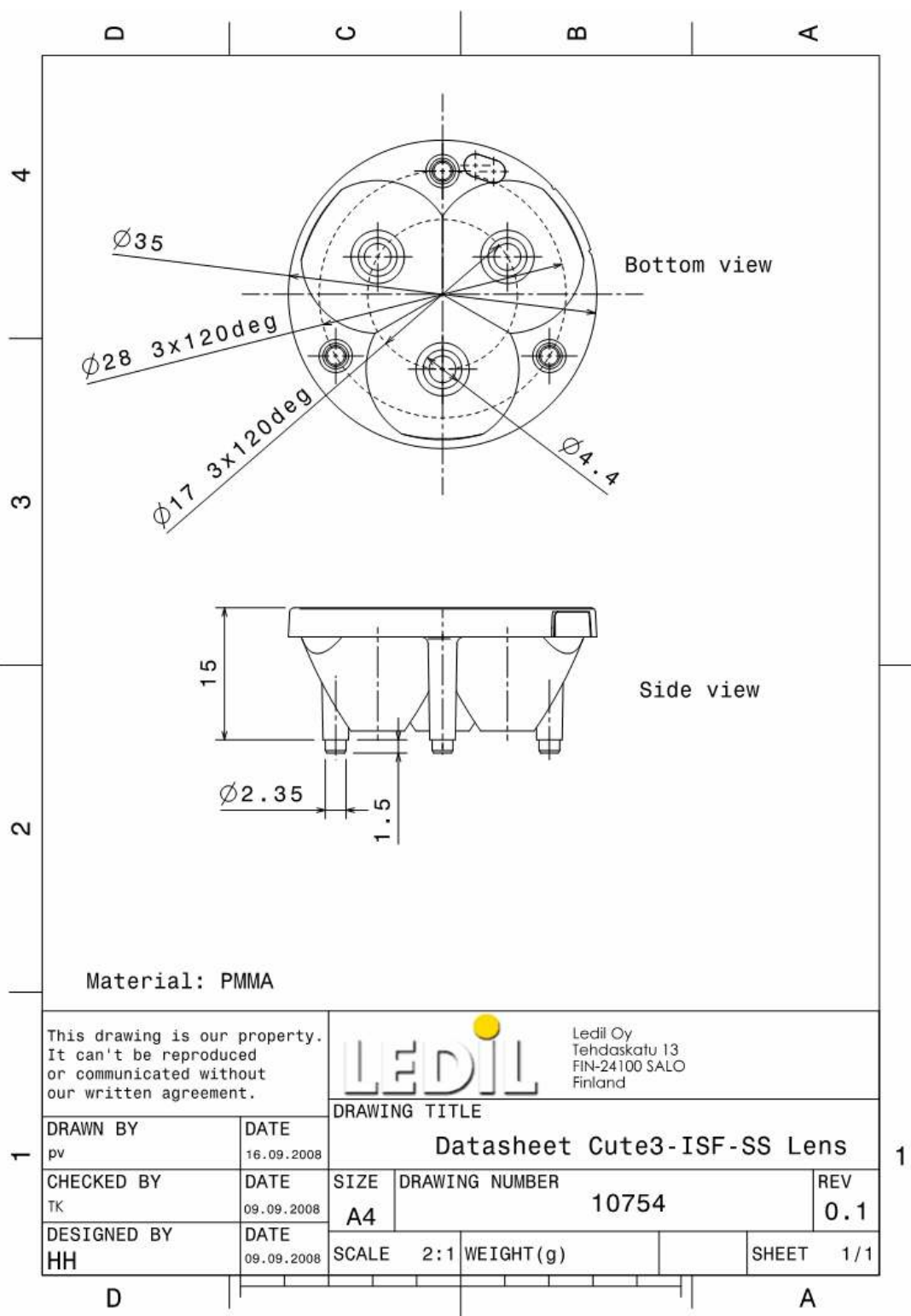
© Ledil Oy – PRELIMINARY - Subject to change without prior notice

Ledil Oy  
Tehdaskatu 13  
FIN-24100 SALO, Finland

[www.ledil.com](http://www.ledil.com)  
email: [ledil@ledil.com](mailto:ledil@ledil.com)  
FAX: +358-2-733 8001

2009-10-12

## DRAWINGS



© Ledil Oy – PRELIMINARY - Subject to change without prior notice