



Search...

Go

Your cart is empty

Home

New Products

Specials

Featured Products

My Account

View Cart

[Sign In](#) or [Register](#)



Register With Bonus



Free shipping

Product 71/71

< Prev

Listing

Next >



## ZXY6010 ZXY6010S constant regulated 60V 10A 600W DC power sup

£56.07

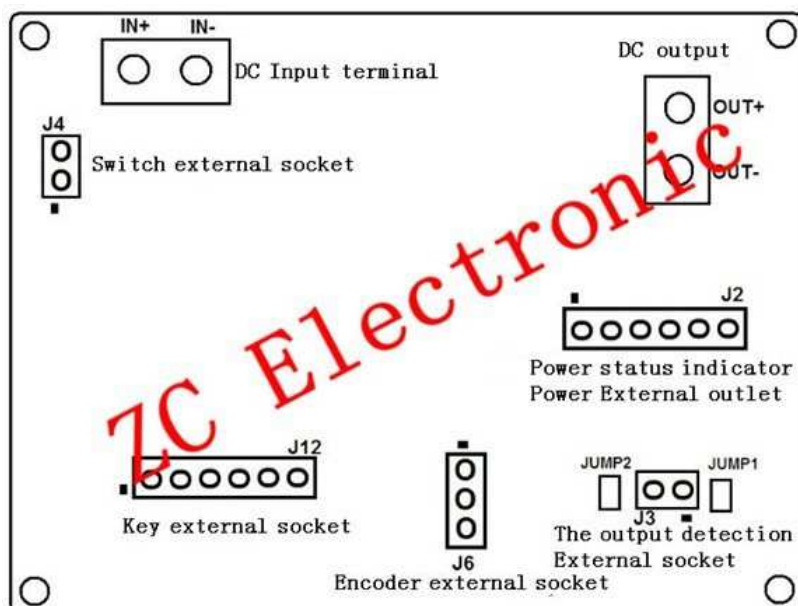
[Customer](#)

Service/Service al  
Cliente

[Contact Us](#)

010x external expansion interfaces are described in detail:

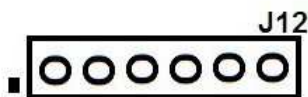
ZXY6010D / S interface position layout:



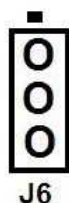
Expansion of ZXY6010D / S Interface Description: ZXY6010D / S, has a rich expansion interface, as follows



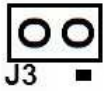
No. 1.: J4, switch expansion interface, J4 external power switch on the board must be placed in the OFF state.



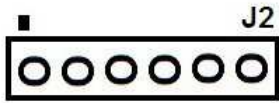
2. No.: J12, the left side of the small box from the left to right P1: com, P2: ↑ keys, P3: ↓ keys, P4: <> / M button, P5: the SEL button P6: OUT / OK button.



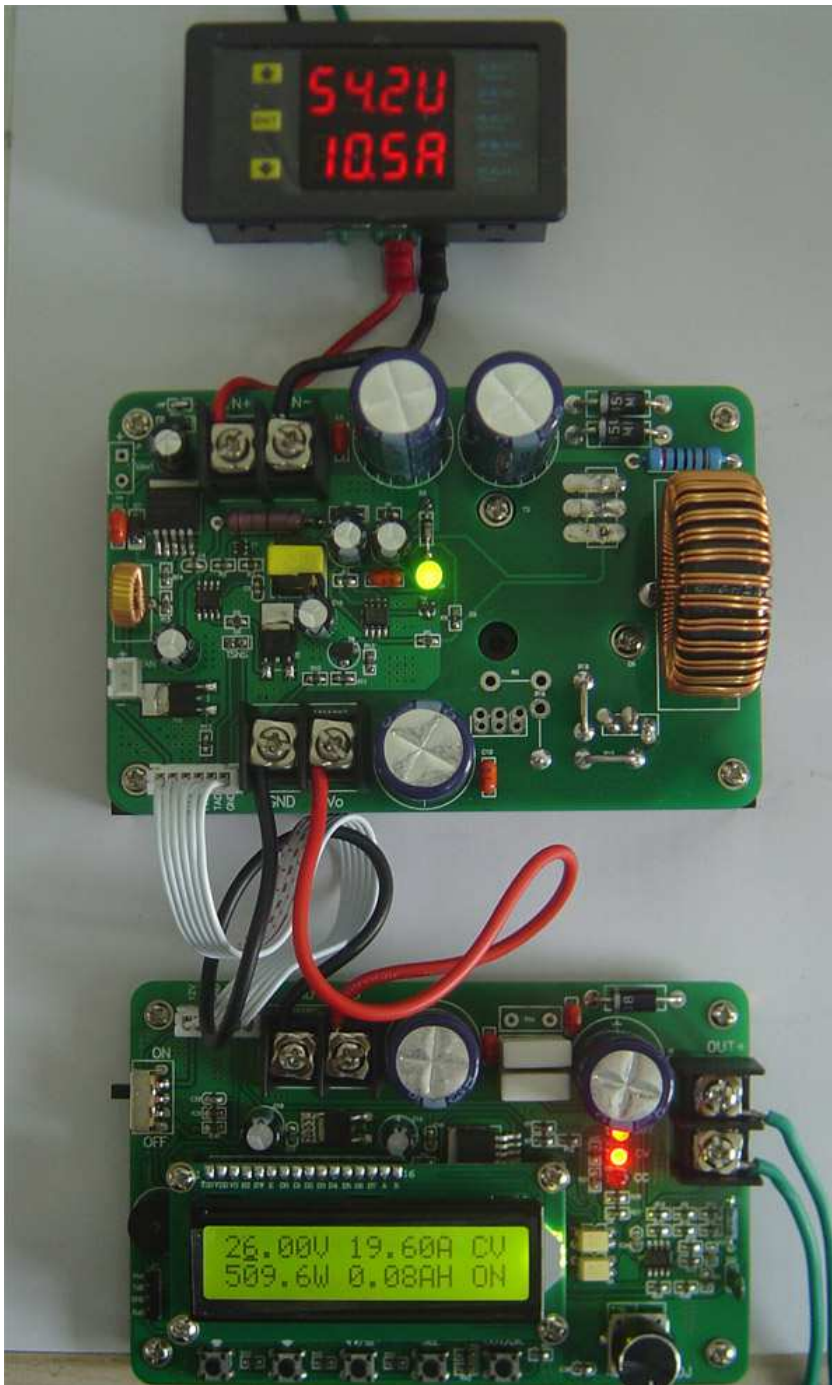
3. No.: J6, on top of a small box from the top to bottom P1: pin of encoder P1, P2: encoder com, P3: encoder P3 pin.



No. 4.: J3, from the small box on the right from right to left P1: OUT + P2: OUT-power output of lead, disconnect JUMP1, the JUMP2 short-circuit point.



5. No.: J2, left a small box from the left to right P1: CV + P2: CV-, P3: CC + P4: the CC-, P5: OUT +, P6: OUT-. Corresponding OUT indicator which resistor R25, R27 corresponding CV lights, R28 corresponding the CC indicator, change the size of the three resistance, adjust the brightness of an external indicator.





• 21 Units in Stock

Add to Cart:

[Add to cart](#)

Current Reviews: 1

### Processing Time

- Ships in 24 hours: Processing Time is guaranteed to be shorter than 24 hours.
- Typical Processing Time: 1 - 3 days

We ship to over 200 countries worldwide!



Copyright © 2006-2017 Boardss Co.,Ltd. All Rights Reserved.